

Retail & Amenity Distribution vs. Racial Composition in Harris County

Do majority-Black neighborhoods host the same mix of everyday amenities as the rest of the county?

Majority-Black block groups, where Black residents make up at least 50% of the population, contain 7.86% of all Harris County residents.

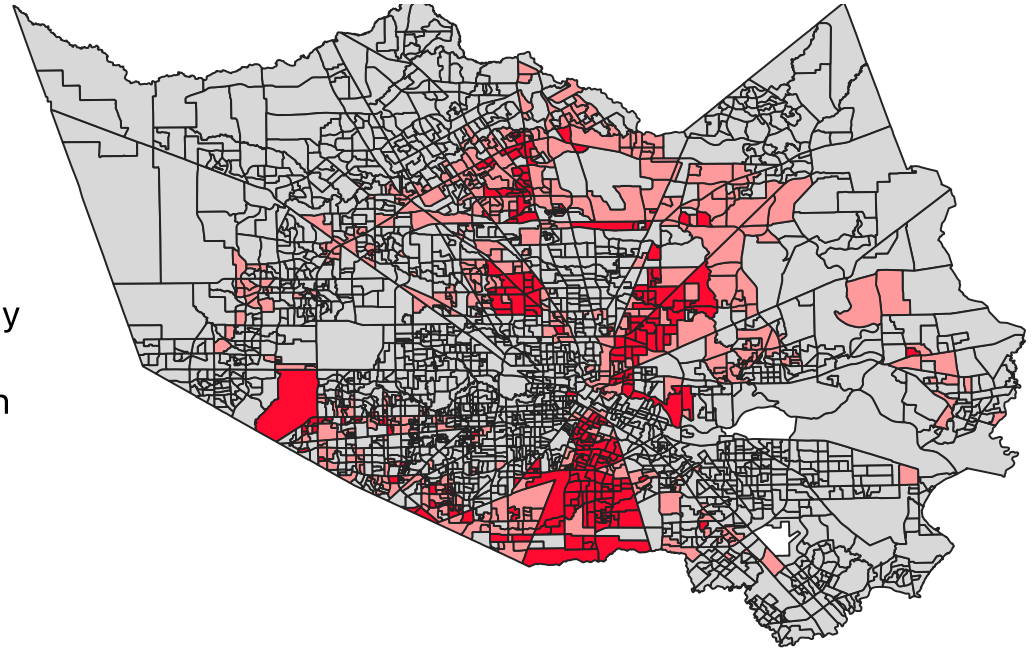
The next slides display five point-layers:

1. Alcohol retailers
2. Bakeries
3. Playgrounds
4. Fast-food restaurants
5. Grocery stores

For each layer you will see:

1. A county map highlighting every location and shading block groups by Black-population share.
2. A headline statistic showing the percentage of that amenity located in majority-Black areas.
3. A consolidated bar chart comparing those percentages against the 7.85% population baseline.

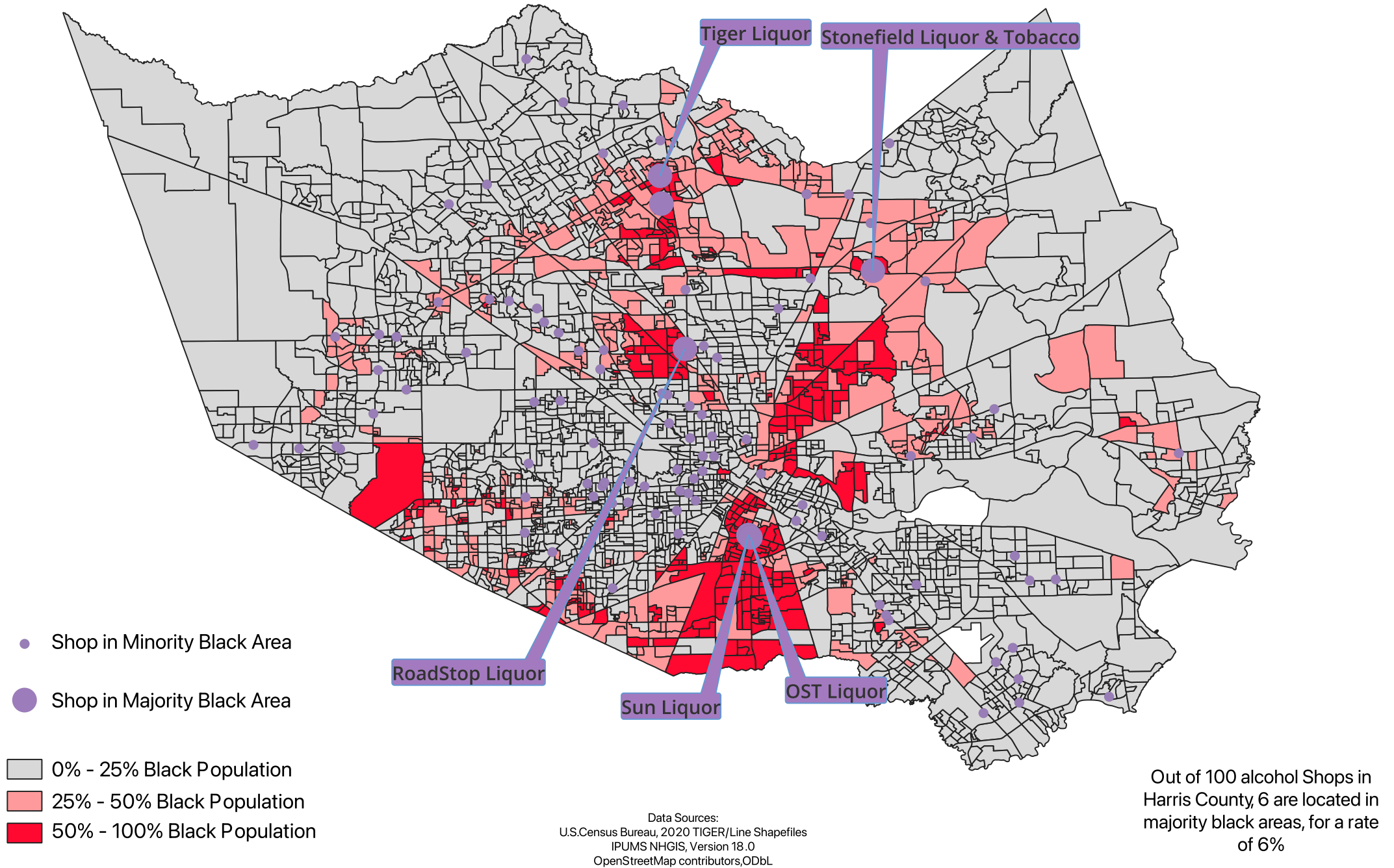
The goal is to test whether these everyday services are distributed proportionally, or if majority-Black neighborhoods are over- or under-represented in access to each amenity.



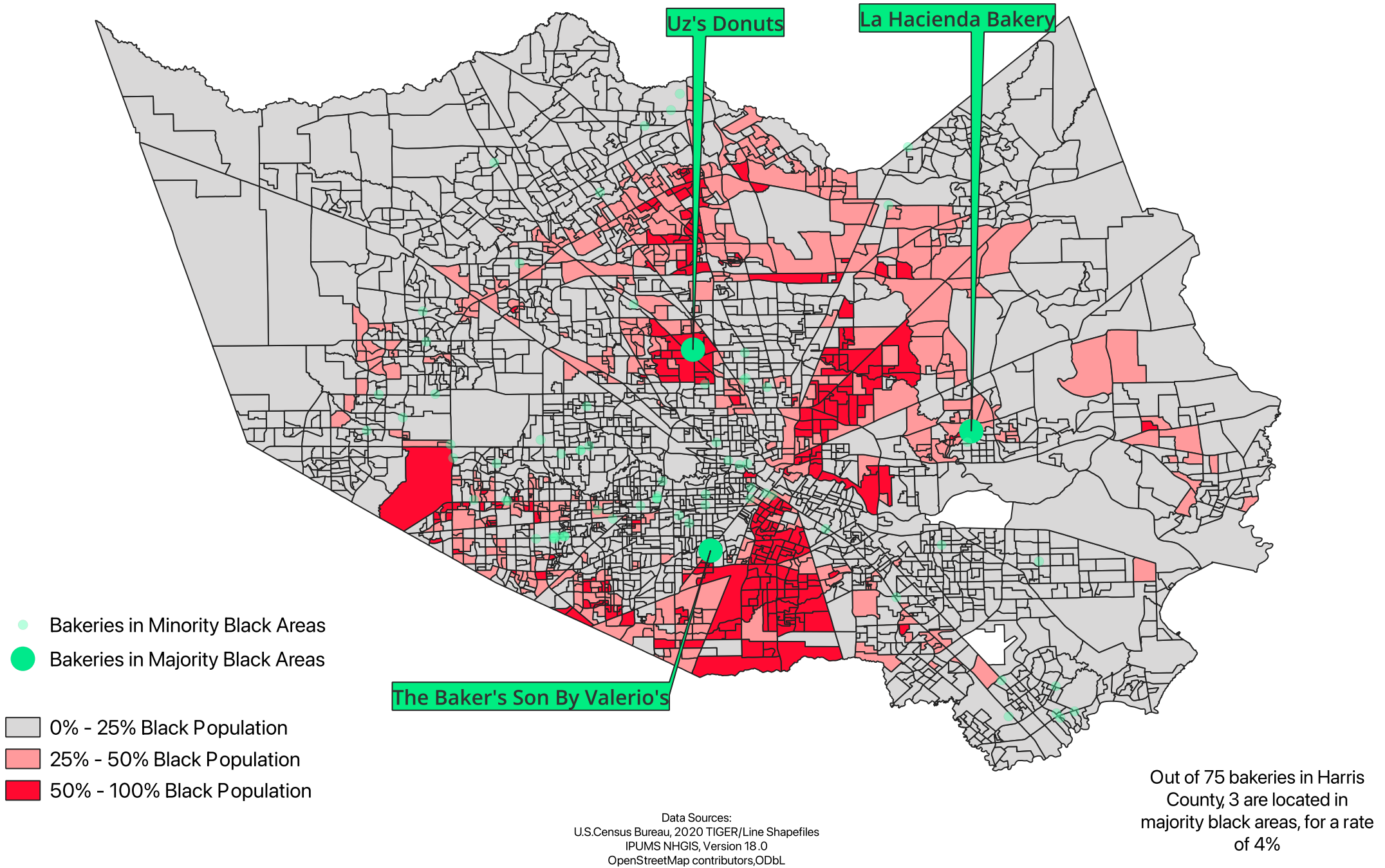
Data Sources:
U.S. Census Bureau, 2020 TIGER/Line Shapefiles
IPUMS NHGIS, Version 18.0
OpenStreetMap contributors, ODbL

Created by Vincent Wren

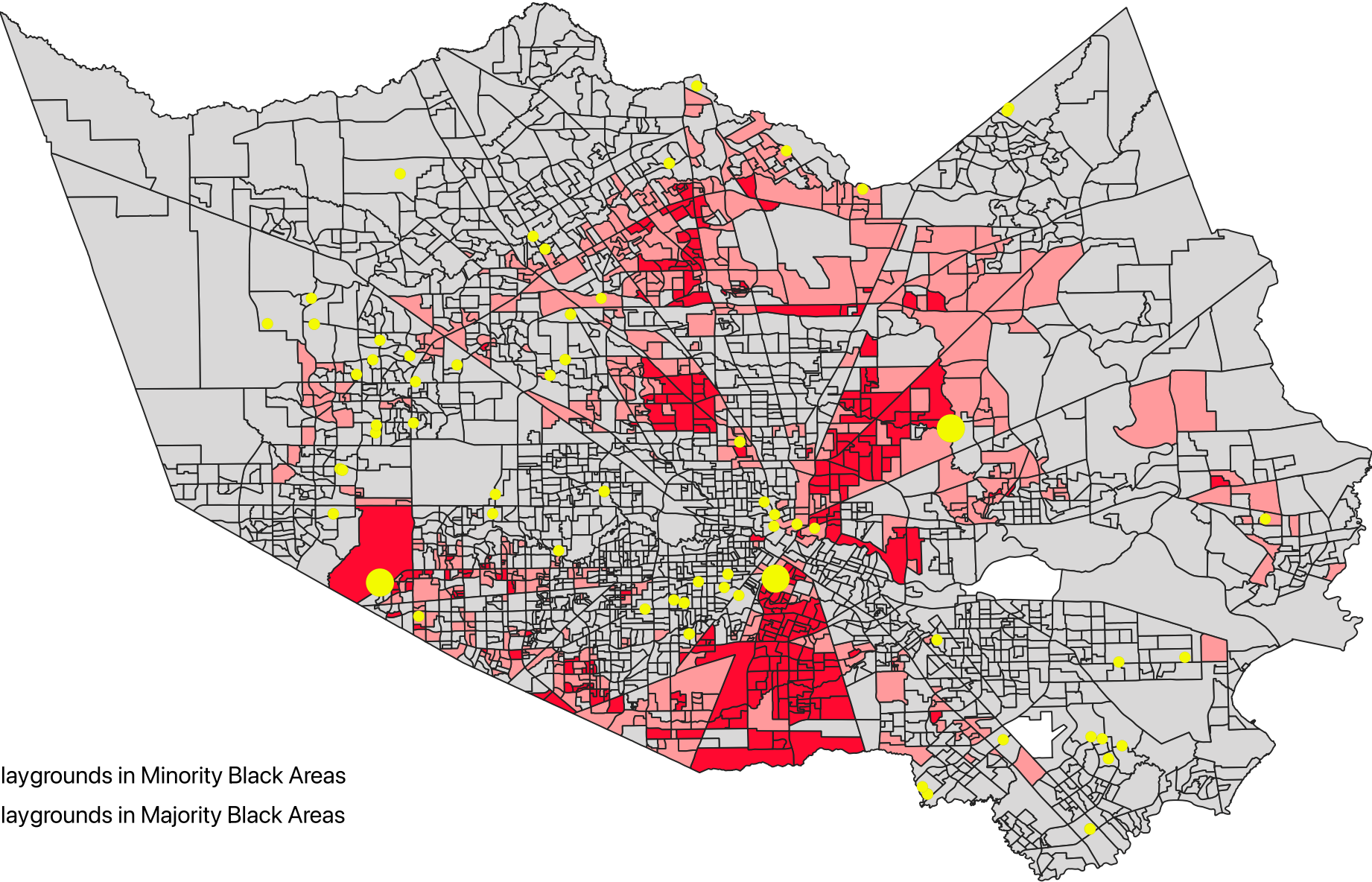
% of Alcohol Stores in Majority Black Areas in Harris County



% of Bakeries in Majority Black Areas in Harris County



% of Playgrounds in Majority Black Areas in Harris County



- Playgrounds in Minority Black Areas
- Playgrounds in Majority Black Areas

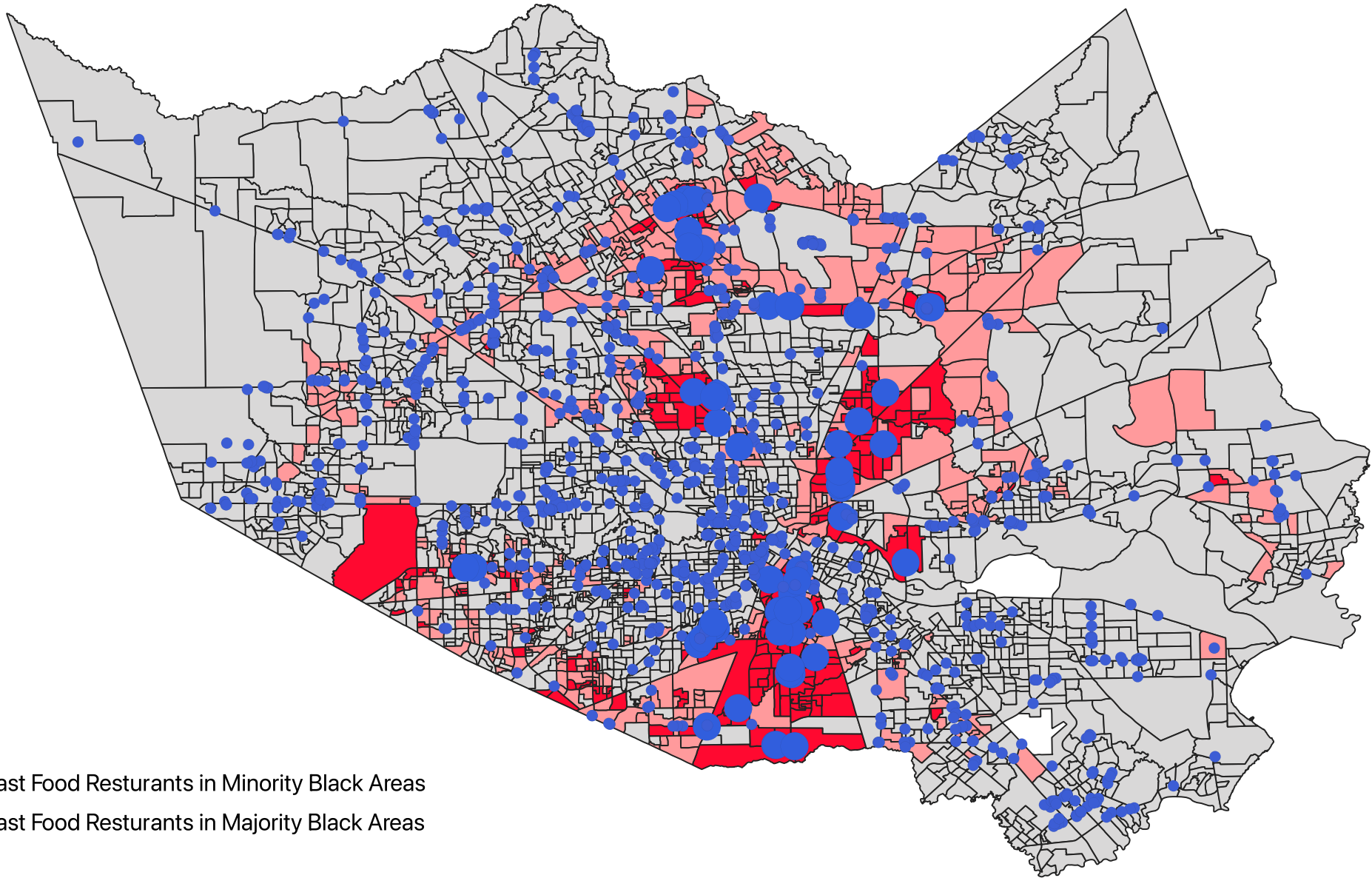
- 0% - 25% Black Population
- 25% - 50% Black Population
- 50% - 100% Black Population

Data Sources:
U.S.Census Bureau, 2020 TIGER/Line Shapefiles
IPUMS NHGIS, Version 18.0
OpenStreetMap contributors, ODbL

Created by Vincent Wren

Out of 76 playgrounds in Harris County, 3 are located in majority black areas, for a rate of 3.95%

% of Fast Food Resturants in Majority Black Areas in Harris County



- Fast Food Resturants in Minority Black Areas
- Fast Food Resturants in Majority Black Areas

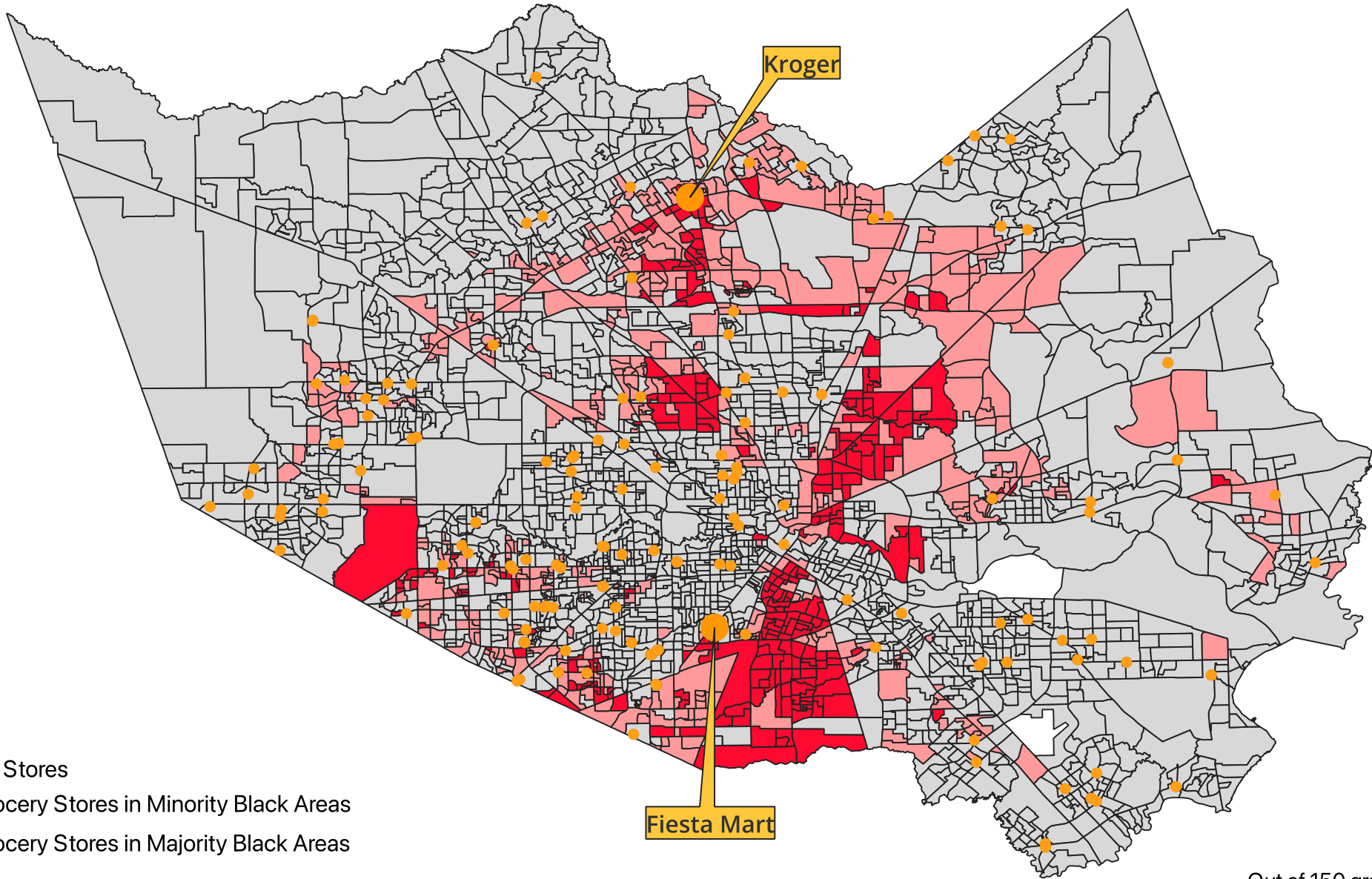
- 0% - 25% Black Population
- 25% - 50% Black Population
- 50% - 100% Black Population

Data Sources:
U.S.Census Bureau, 2020 TIGER/Line Shapefiles
IPUMS NHGIS, Version 18.0
OpenStreetMap contributors, ODbL

Created by Vincent Wren

Out of 1268 fast food resturants in Harris County, 76 are located in majority black areas, for a rate of 6%

% of Grocery Stores in Majority Black Areas in Harris County



Grocery Stores

- Grocery Stores in Minority Black Areas
- Grocery Stores in Majority Black Areas

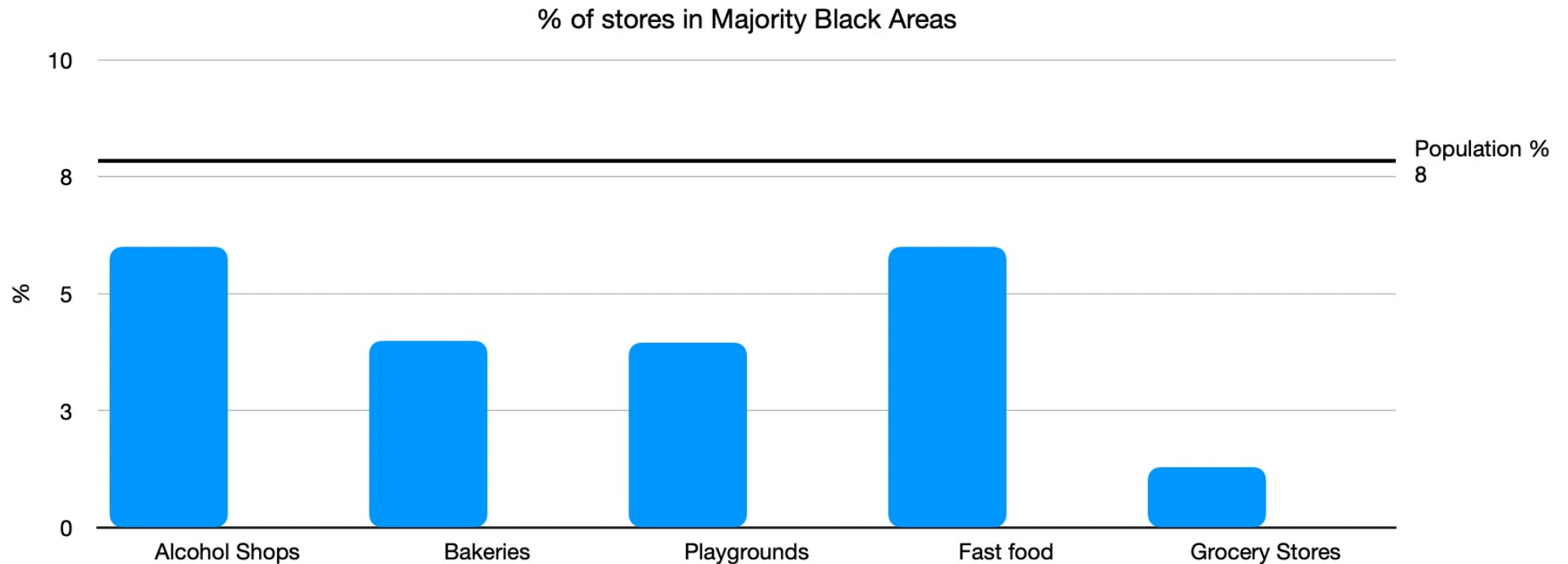
- 0% - 25% Black Population
- 25% - 50% Black Population
- 50% - 100% Black Population

Data Sources:
U.S.Census Bureau, 2020 TIGER/Line Shapefiles
IPUMS NHGIS, Version 18.0
OpenStreetMap contributors, ODbL

Created by Vincent Wren

Out of 150 grocery stores in Harris County, 2 are located in majority black areas, for a rate of 1.3%

Majority-Black areas house 7.8 % of Harris County residents but host only 1–6 % of mapped amenities.



The analysis shows that amenities are under-represented in majority-Black block groups relative to their 7.85 % share of Harris County's population. Grocery stores are the starkest case: only 1% of all outlets fall in these neighborhoods, reinforcing concerns about food deserts. Bakeries and playgrounds sit around 4%, while alcohol outlets and fast-food restaurants reach about 6%, the highest among the categories. The pattern is telling: calorie-dense, lower-nutrition options and alcohol are nearest to proportional, whereas fresh-food retail lags far behind.

Next steps include normalizing counts by population and land area to obtain per-capita and density measures, and incorporating additional variables such as income, zoning, and transit access to determine whether race, economics, or regulation best explains the observed distribution.